

Movetech UK Rental Equipment

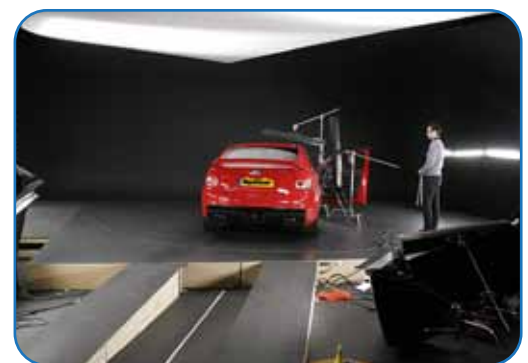
# Rental Equipment for Highly Creative Movement

Our reliable and cost effective turntable rental service is widely used for exhibitions and events, TV commercials and film, and for product launches and reveals, anything, in fact, that just has a short term requirement.

Our rental turntables range from simple, lightweight product display carousels through to revolving stages for major music events - and everything in between.

We will discuss your specific requirements with you and, if the diameters and capacities of our standard rental turntables don't quite meet your requirements, or you would like options such as a static centre, oscillation, timed or positional hesitation, we will tailor a unit to suit your needs.

Whilst the majority of our rental turntables are suitable for self-assembly, we offer a complete delivery, installation and removal service worldwide.



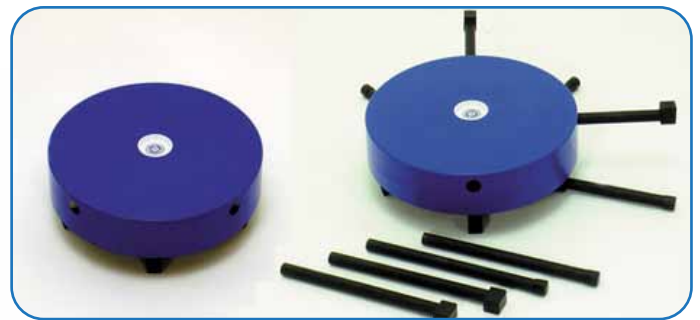
## Movetech UK Rental Equipment

# Product Display Turntables

## Small Carousel Range

Introducing movement from Movetech UK to the showroom will bring the excitement of an exhibition to the sales floor, helping to attract customers and increasing sales. Our smaller carousels will allow you to create stunning displays with lots of impact.

Our small Carousel turntables are well suited to generating simple, but unique, full circular platform displays, or they can be combined with other movement in our range and, for instance, imaginative lighting effects, to create something really special that stops customers in their tracks.



## Large Carousel Range

Introducing movement from Movetech UK to the showroom will bring the excitement of an exhibition to the sales floor, helping to attract customers and increasing sales. Our larger carousels will allow you to create stunning displays with lots of impact.

Our Midi and Maxi Carousel turntables are well suited to generating simple, but unique, full circular platform displays, or they can be combined with other movement in our range and, for instance, imaginative lighting effects, to create something really special that stops customers in their tracks.



## Movetech UK Rental Equipment



## Movetech UK Rental Equipment

### Automotive

#### Merlin Major 21 - Invisible Turntable

The Merlin Major 21 car revolve is virtually invisible in operation, allowing vehicles to be rotated as if by magic. Used across the world by major car manufacturers in car showrooms, exhibitions and for product launches, the Merlin Major 21 combines eye-catching movement with ease of installation.

Designed to rotate the majority of contemporary vehicles, the revolve is ideal for turning both smaller family sized saloons and larger prestige marques up to 2,500kg in weight. This flexibility ensures that a full vehicle stock can be rotated, enabling attractive yet cost-effective displays to be created.

Totally portable and requiring no floor fixing, the robust, compact, versatile and extremely smooth running Merlin Major 21 can even be used outdoors, operating from the car's own 12 volt battery, opening it up for forecourt use, launch events, special vehicle brand displays or promotions at the local shopping mall.

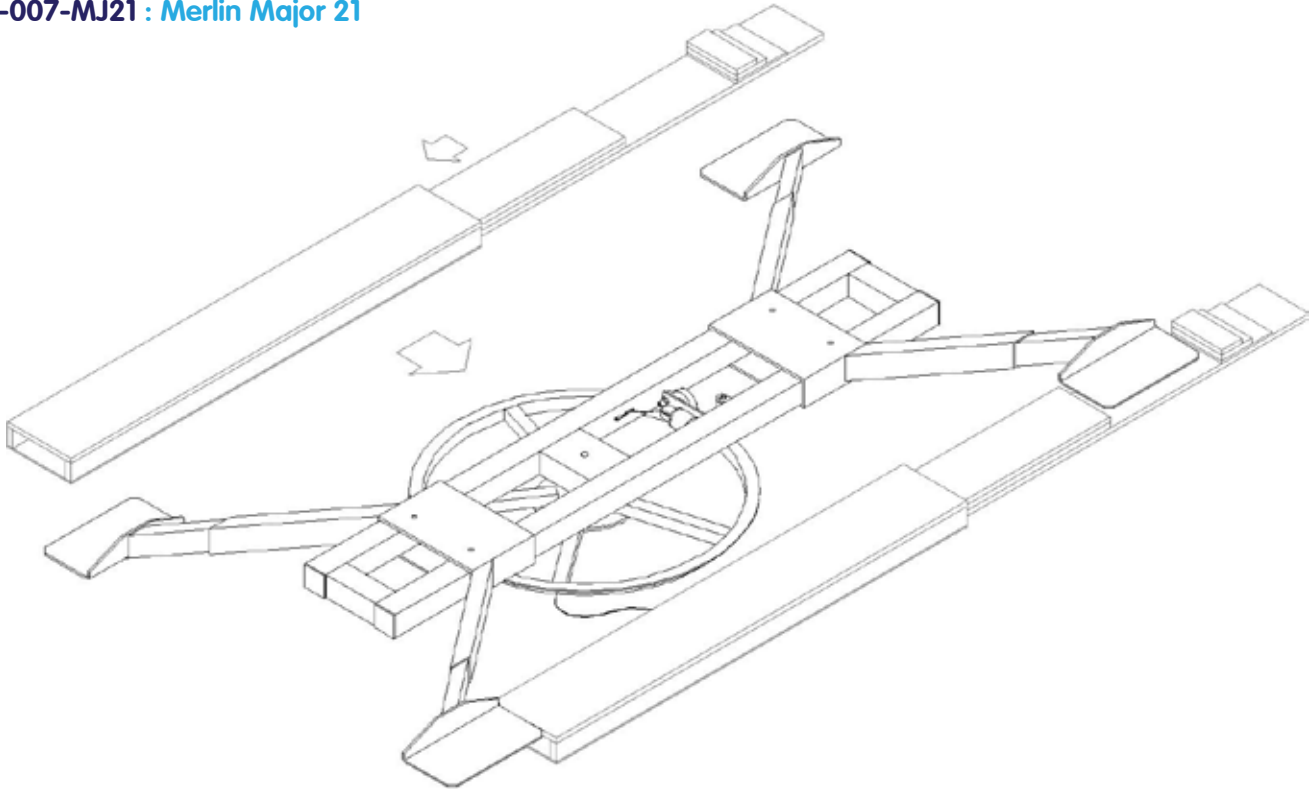
Like the Olympian 4.5 and revolving stages, the Merlin features 5 amp slip rings to provide an electrical connection to the rotating element, thereby enabling further lighting and other special effects.



D-007-MJ21 : Merlin Major 21

Movetech UK Rental Equipment

**D-007-MJ21 : Merlin Major 21**



## Olympian Turntable

The Olympian Turntable is a 4.5m diameter 2 tonne capacity full platform revolve designed with the car showroom in mind.

The Olympian has carved a distinctive niche for itself in car showrooms and exhibition halls across the world because it combines elegance with ease of installation.

The unit's low profile allows it to be installed on top of an existing showroom floor, and it comes fully finished with an attractive decorative top.



## Movetech UK Rental Equipment

### Revolving Stages

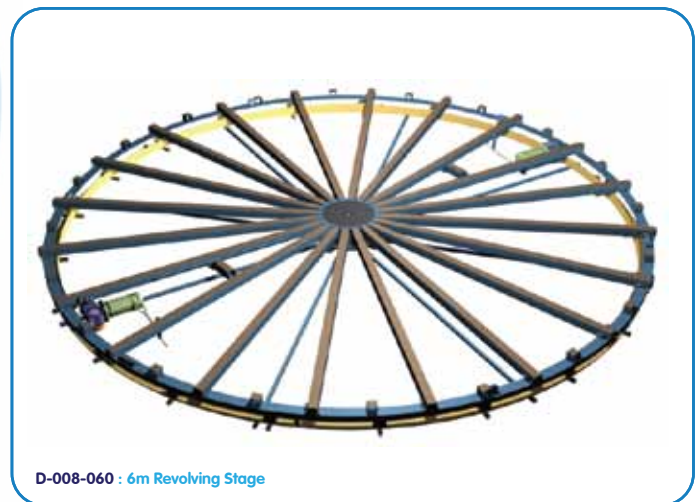
#### Diameters from 1m to 33m from stock

A Movetech UK revolving stage is built to a unique design that provides a stable, high capacity rotating platform. In the retail and exhibition industries movement adds a dynamic dimension to product display.

For the events, film and TV industries a Movetech UK revolving stage can create spectacular film sequences, TV commercials or impressive product launches or reveals by moving the audience or the merchandise as required.

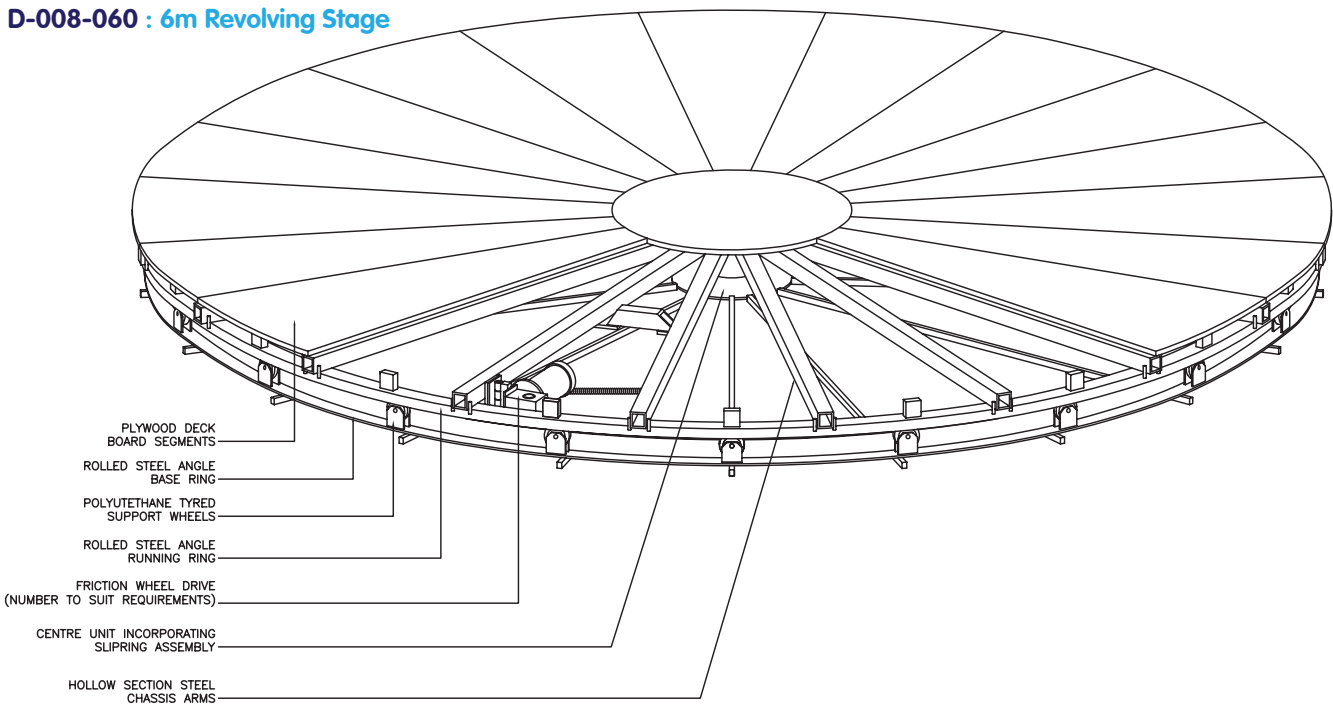
Examples of where Movetech UK revolving stages have been used are: car showrooms; concert venues; conference presentations; exhibition halls; fashion shows; film sets; theatre productions; TV shows; and museum and heritage visitor centres.

Movetech UK has been designing and manufacturing revolving stages for 50 years and prides itself on customer service and product quality. Many of our products outlive their design life, and numerous units are still working after tens of years in service.



Movetech UK Rental Equipment

**D-008-060 : 6m Revolving Stage**



**Revolving Stage Specifications**

Product Code	Product Description	Power Consumption (Power consumption in watts, excluding slip rings)	Maximum Display Properties		
			Diameter (m)	Height (m)	Weight (kg)
D-008-020	Revolving Stage - 2m diameter	750	2	2	1,000
D-008-025	Revolving Stage - 2.5m diameter	750	2.5	2	1,000
D-008-030	Revolving Stage - 3m diameter	750	3	2	2,000
D-008-040	Revolving Stage - 4m diameter	750	4	4	2,000
D-008-045	Revolving Stage - 4.5m diameter	750	4.5	4	2,000
D-008-050	Revolving Stage - 5m diameter	750	5	4	2,000
D-008-060	Revolving Stage - 6m diameter	1500	6	5	3,000
D-008-070	Revolving Stage - 7m diameter	1500	7	5	3,000
D-008-080	Revolving Stage - 8m diameter	3000	8	5	5,000
D-008-100	Revolving Stage - 10m diameter	3000	10	5	8,000

For information on revolving stages ranging from 10m to 33m in diameter, please contact Movetech UK and we will be happy to advise you on your needs.

Static centre and oscillation options are also available.



Movetech UK Rental Equipment

## CU5 Turntable Range

Medium capacity units up to 5 tonnes. Ideal for rough ground installations. Nevertheless the equipment is easily and quickly put into use - a fork lift or Hi-Ab is required. Various sizes are available up to 5 metres. The CU5 RANGE is a cantilevered design. The main drive motor gearbox, powered clutch mechanism, a slip ring assembly and other accessories are fully protected in the centre of the unit. This makes for a highly reliable unit and is extremely robust. All units are completely decked (see the additional information attached).



TYPE:	**DIAMETER:	HEIGHT:	SLIP RING CAPACITY:	CAPACITY:	SPEED: (others on application)	OPTIONS:			
						STATIC CENTRE	HESITATION:	VARIABLE SPEED:	OSCILLATION:
H 706	2 mtr.	420mm (16.5")	(single phase) 10 amps	4 tonnes	Standard 1 rpm	NOT Available	Available	Available	Available
H 710	3 mtr.	420mm (16.5")	10 amps	3 tonnes	Standard 1 rpm	NOT Available	Available	Available	Available
H 714	4.5 mtr.	420mm (16.5")	10 amps	2.5 tonnes	Standard 1 rpm	NOT Available	Available	Available	Available
H 716	5 mtr.	420mm (16.5")	10 amps	2.5 tonnes	Standard 1 rpm	NOT Available	Available	Available	Available

\*\* The range of available sizes is constantly changing and should be checked at time of order

### Decking – 18mm Plywood

The CU5 Range of Turntables have the advantage of being able to:-

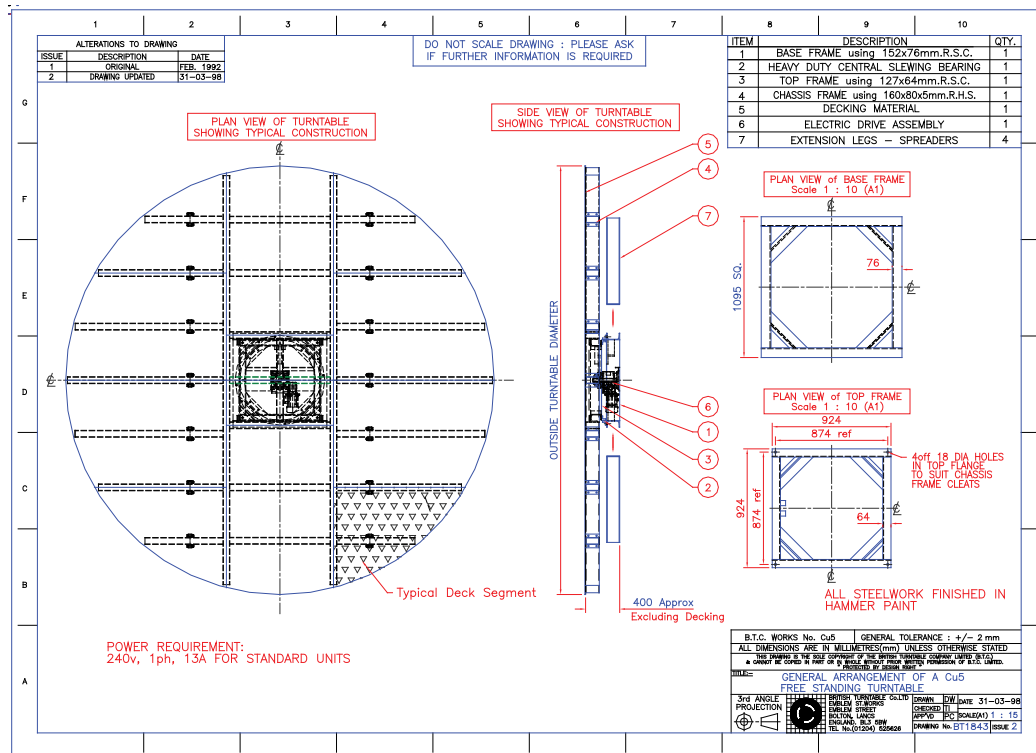
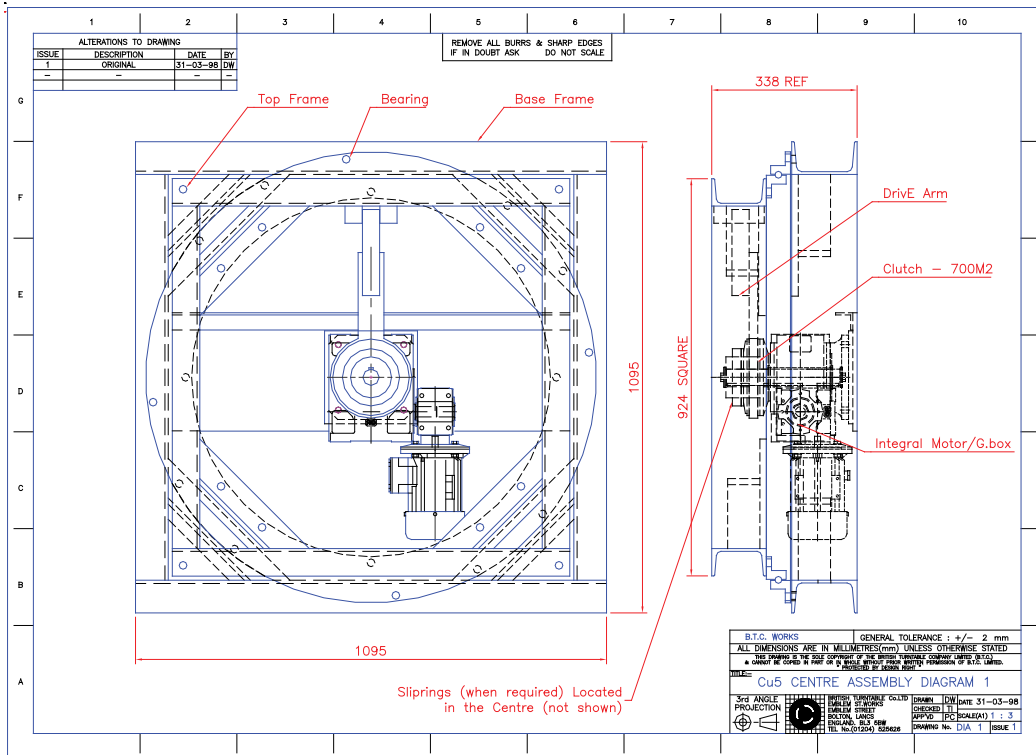
- (1) Operate on uneven ground
- (2) The height of the unit can be raised economically
- (3) The diameter of the unit can be amended economically
- (4) The speed of the unit can be altered economically
- (5) The unit can be easily installed, requiring fork-lift truck or Hi-ab
- (6) A Single Phase power supply (13 amps) is required.





Movetech UK Rental Equipment

**Cu5 Turntable**



Movetech UK Rental Equipment



## CU25 Turntable Range

A cantilever designed 25 tonne capacity unit. Easily installed but requiring either craneage or Hi-Ab off-loading. Full range available.

TYPE	**DIAMETER:	HEIGHT:	SLIP RING CAPACITY: without static centre	CAPACITY:	SPEED:	OPTIONS:		
						STATIC CENTRE	HESITATION:	OSCILLATION:
H 719	4.88 mtr. (16')	685mm (27'')	10 amps	10 tonnes	Variable up to 2rpm	Available	Available	Available
H 720	6.10 mtr. (20')	685mm (27'')	10 amps	10 tonnes	Variable up to 2rpm	Available	Available	Available
H 736	9.70 mtr. (31' 10'')	8.38 mm (33'')	10 amps	5 tonnes	Variable up to 2rpm	Available	Available	Available

\*\* The range of available sizes is constantly changing and should be checked at time of order

### Decking – 25mm Plywood

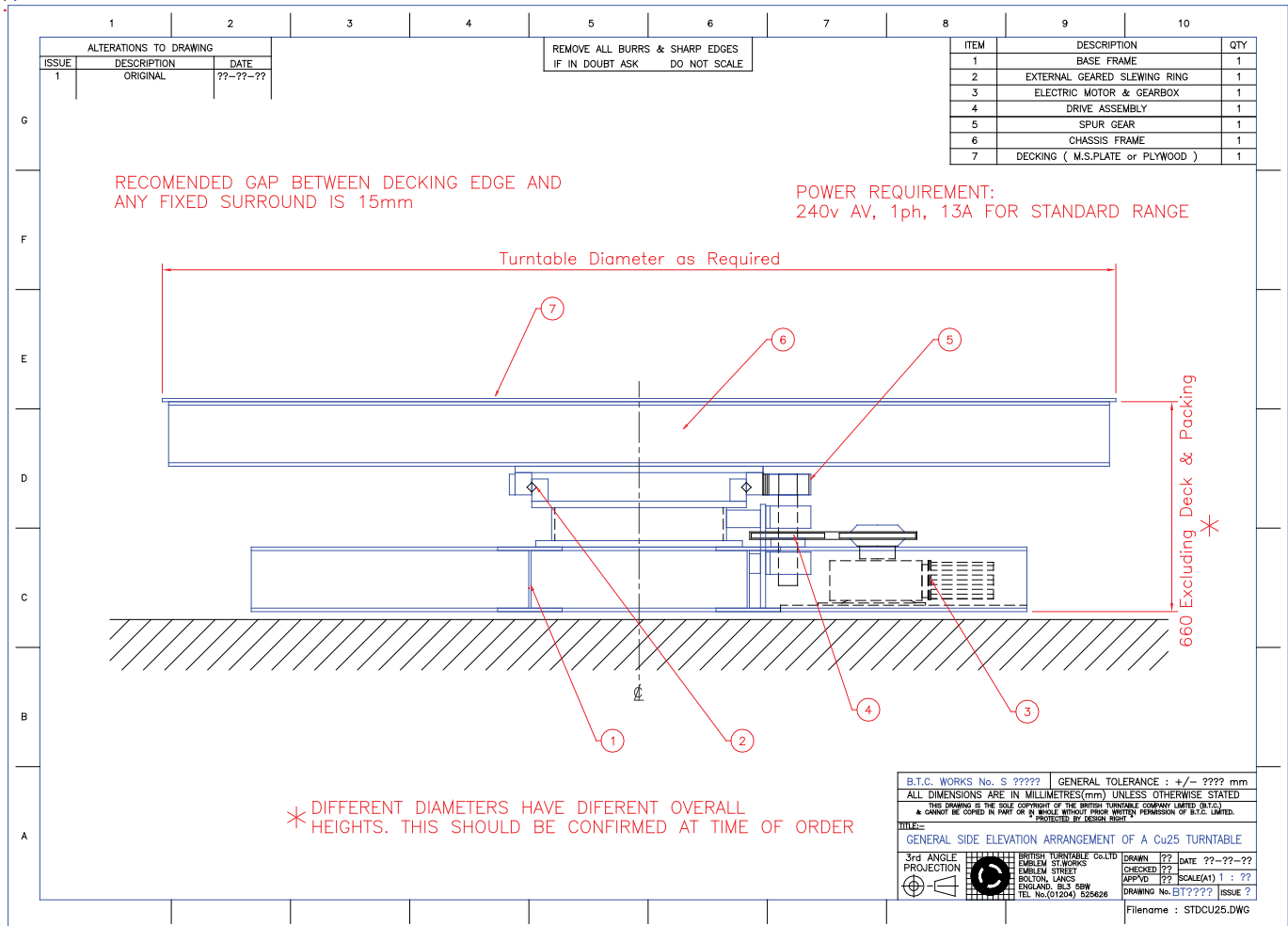
The CU25 Range of Turntables have the advantage of being able to:-

- (1) Operate on uneven ground
- (2) The height of the unit can be raised economically
- (3) The diameter of the unit can be amended economically
- (4) The speed of the unit can be altered economically
- (5) The unit can be easily installed, requiring craneage or “Hi-ab”
- (6) A Single Phase power supply (13 amps) is required.



Movetech UK Rental Equipment

**CU25 Turntable**



## Movetech UK Rental Equipment

### Movetech UK

Movetech UK, as part of British Turntable Co, began in November 1959 as Bolton Turntable Co Ltd, manufacturing a single product, a turntable to turn a car in an automobile showroom.

This was a novel idea at the time, even worldwide, and the company subsequently prospered by designing and manufacturing a range of display turntables that would benefit every type of shop in the high street.

The company enjoyed steady growth through the sixties when, in "swinging 60s" London, large fashion outlets and smaller boutiques found movement attracted shoppers; exporting began in a small ways in 1965; and in 1968 a rental division was established to satisfy the short term demands of television shows, exhibitions and product launches.

Today the rental division is an important part of the company's operations, with the London depot regularly supplying to major TV and film producers, and barely an exhibition going by without a Movetech UK revolve being used as a sign, to display a product, or to revolve the stand itself.

1972 saw a name change to British Turntable Co Ltd to reflect the growing importance of exporting. The company has now exported to 140 countries throughout the world.

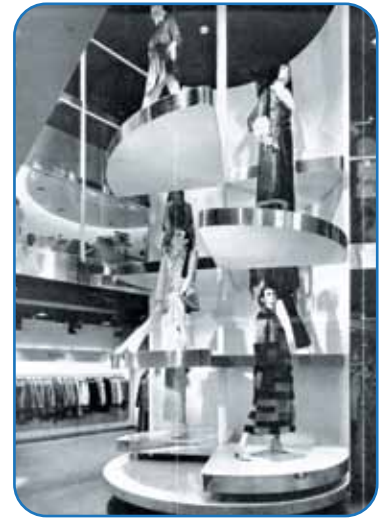
Supplying industry with turntables evolved in the 1970s, and this side of the business has grown extraordinarily, particularly through the acquisition in 2004 of Hovair Systems and Cawley Marine Industrial.

It was this growing diversity that demanded, in 2008, a further name change, this time to Movetech UK.

Currently the display division offers almost 100 standard movement products and revolving stages, with a separate range available for the car showroom.

Still a family firm, the founder of the company, John Entwistle, acts as Chairman while his son, Tim Entwistle, is Managing Director.

The company thrives on its design and engineering base, dedicated to quality and service, proud of its past and moving forward with enthusiasm and dedication.



### Contact Us

#### Movetech UK Head Office

Emblem Street  
Bolton  
BL14LW  
United Kingdom

t: +44 (0)1204 537682

e: rental@movetechuk.com

#### Movetech UK Epping Depot

Unit 5, Hayleys Manor Farm, Hayleys Manor Stack Yard,  
Upland Road, Thornwood, Epping Upland  
Essex CM16 6PQ,  
United Kingdom

t: +44 (0)1992 574 602

e: rental@movetechuk.com